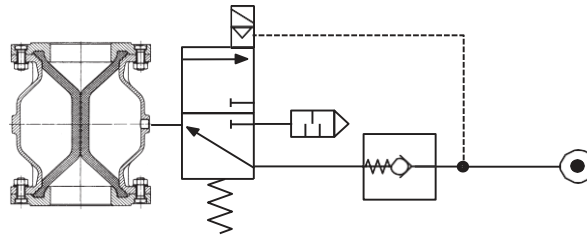
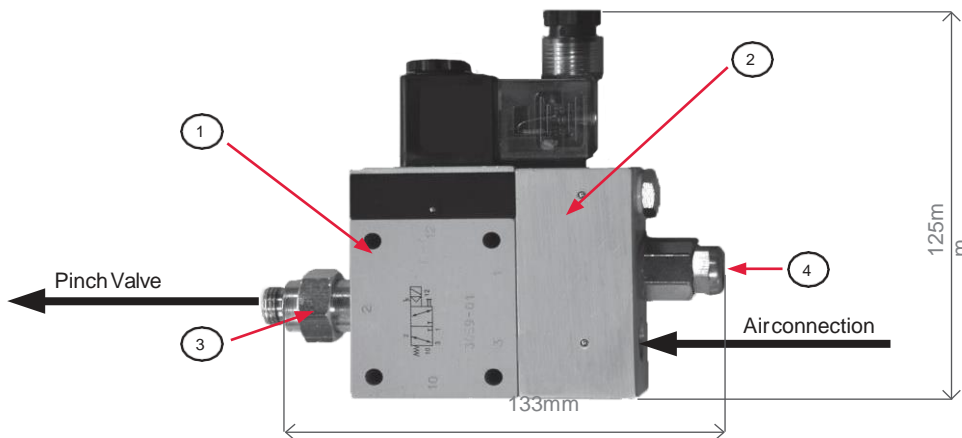


Safety Arrangement type SS



By using a protection circuit a closed air pinch valve will stay closed if the compressed air/power supply fails. If the compressed air fails, the air operated pinch valve cannot be opened by the solenoid valve (electrically/ mechanically). If there is a power cut, the pinch valve can be opened and closed by means of a manual override. The used solenoid valves are checked especially for tightness, thus guaranteeing the longest blow-down pressure stability possible. The blow-down pressure stability, which is affected by time in terms of how long a air operated pinch valve will stay closed without a compressed air supply, is still dependent on the volume of air and a air operated pinch valve's tightness.



Consistingof:

- ① 1 x Solenoid Valve* with light connector and protective circuit
- ② 1 x Controlblock
- ③ 1 x Fitting G ¼" with O-ring
- ④ 1 x Silencer + Small parts

Technical details subject to change without notice.



Basecamp Process Components, LLC

7685-A Corporate Blvd., Plain City, Ohio 43064, USA

T: +1 614-873-8995 • E-mail: info@akopinvalves.com • Web: www.akopinvalves.com